



# SMI COLD THERAPY™

EVIDENCE-BASED NEUROPATHY PREVENTION



MADE IN  
THE USA

# SMI COLD THERAPY CHEMO INFUSION WRAP



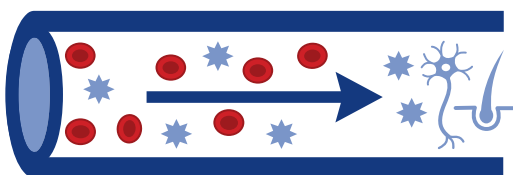
## Advanced Protection During Chemotherapy

Engineered cooling. Proven physiology. Better patient experience.

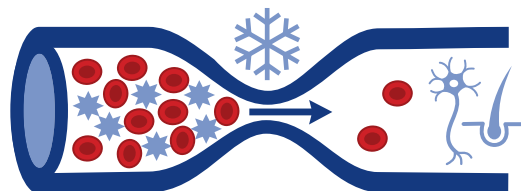
- 3+ hours of sustained cooling during infusion for consistent therapeutic effect
- Targeted vasoconstriction response helps reduce chemotherapy exposure to peripheral nerves
- Creates a protective barrier at the point of care against neurotoxic and cytotoxic agents
- Precision compression + temperature-controlled design ensures a secure, comfortable fit for hands and feet
- Supports nerve preservation and maintains quality of life throughout treatment

### The Vasoconstriction Mechanism

Normal Blood Flow



Cold-Induced Vasoconstriction



Cold-induced vasoconstriction restricts local blood flow, creating a physical bottleneck that prevents neurotoxic and cytotoxic agents from penetrating peripheral nerves.



**SMI COLD THERAPY™**

Evidence-Based  
Neuropathy Prevention

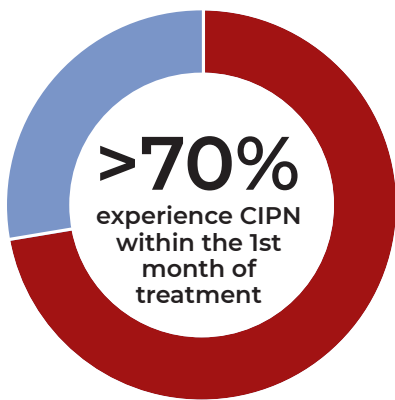
MADE IN  
THE USA

Implementing evidence-based practices leads to exceptional patient outcomes, protected quality of life and efficient, high-quality cancer care.

### RISK OF CIPN WITH TAXANE AND PLATINUM AGENTS

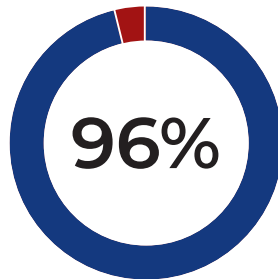
GREATER THAN  
**70%** OF PATIENTS

who are administered Taxane and platinum agents experience CIPN within the 1st month of treatment.

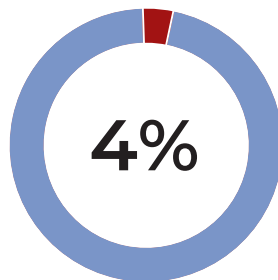


- >70% of patients experience CIPN
- <30% of patients DO NOT experience CIPN

### A 2026 TENNESSEE ONCOLOGY EVIDENCE-BASED PRACTICE QUALITY IMPROVEMENT PROJECT



**96%**  
of patients experienced  
**NO CIPN**



**4%**  
developed  
**Grade 1 CIPN**  
(baseline) & were  
asymptomatic



**100%**  
of patients  
**maintained**  
**quality of life**  
with minimal  
workflow disruptions  
& treatment delays

Sources: \*Quote: <https://www.oncnursingnews.com/view/mary-katherine-montes-de-oca-on-cryo-compression-therapy-for-peripheral-neuropathy-in-gynecologic-cancers>

Global CIPN Estimates: <https://doi.org/10.1136/rapm-2024-106229>



**MADE IN THE USA**

**3.2 Cubic Foot**  
22.5"D  
32.69"H  
20.69"W  
2 Shelves +  
Bottom Area  
Stores up to  
(40) Gel Bags



**6.5 Cubic Foot**  
22 1/4"D  
56 1/2"H  
21 1/2"W  
5 Shelves +  
Bottom Area  
Stores up to  
(90) Gel Bags

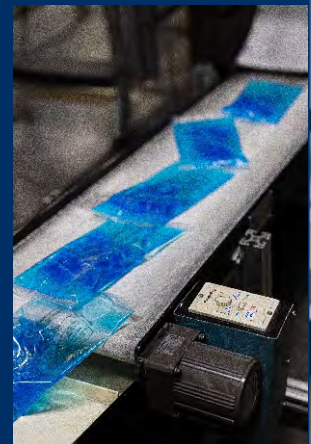


**11 Cubic Foot**  
27.4"D  
73"H  
24"W  
6 Shelves +  
Bottom Area  
Stores up to  
(108) Gel Bags



SMI Cold Therapy offers freezers in various sizes to meet hospital needs at every stage of the patient pathway, completely free of charge. There are no minimum order requirements or contracts to sign.

## Made in the USA from Start...



**...to Finish!**



[smicoldtherapy.net](http://smicoldtherapy.net)  
**540.352.3211**  
60 Commerce Road  
Rocky Mount, VA 24151  
[sales@smicoldtherapy.net](mailto:sales@smicoldtherapy.net)



**SMI COLD THERAPY™**  
Evidence-Based  
Neuropathy Prevention